

505 Cycling Classic

April 4-5, 2020



Omnium Race

&

Animal Protection of NM Fundraiser



USA CYCLING
Permit #2020-408



JDRS
JUNIOR DEVO RACE SERIES



The 505 Cycling Classic would like to thank the following race sponsors for their generous support



NEW MEXICO ORTHOPAEDICS
EXCELLENCE IN MOTION



Race Bible Table of Contents

Welcome Letter	4
Registration	5
General Information.....	6
Omnium Scoring	7
Omnium Prize List.....	8
Packet Pickup & Late Registration	9
NM Orthopaedics Time Trial.....	10-11
Car Crafters/Sandia Speedway Criterium.....	12-13
Mountain States Insurance, Paako Communities Road Race	14
Road Race Course Description	15
Directions to Road Race	16
Map	17

What does APNM do?



Challenging Animal Cruelty

Managing our statewide animal cruelty hotline calls about animal neglect and abuse and offering rewards for tips that solve cruelty cases.



Building Foundations to Keep Animals Safe

Supporting communities to transform so animal tragedies are not the norm.



Protecting Horses, Donkeys and Mules

Helping equines and families, ending horse slaughter, and supporting New Mexico's equine shelters.



Teaching Compassion for Animals

Growing empathy through in-demand education programs designed for all ages, with the assistance of registered therapy dogs.



Securing Sanctuary for Chimpanzees

We've ended invasive research on chimps and are helping the survivors to sanctuary.



Promoting Coexistence with Wildlife

Protecting keystone species, banning killing contests, and ending the use of cruel traps and poisons.



12th Annual 505 Cycling Classic
Benefiting Animal Protection of New Mexico
April 4-5, 2020



Dear Race Participant,

Thank you so much for participating in this year's 505 Cycling Classic Omnium Race. Now in its 12th year, this event is the second largest cycling event in New Mexico, and this is the first year we are participating in the USAC Junior Devo Race Series for juniors. Thanks to our sponsors, we have a great prize list -- approximately \$3,000 in cash and prizes -- plus additional funds that 505 Cycling donates to raise awareness and provide funding for [Animal Protection of New Mexico \(APNM\)](#).

All proceeds from this race will be donated to [APNM](#), whose mission is to advocate for animals by effecting systemic change and working towards the humane treatment of all animals. This includes active support of local and state legislation towards the prevention of animal cruelty, as well as public awareness campaigns designed to teach students and communities across New Mexico about the ongoing threats to animals.

For more than a decade, the 505 Cycling Team has led this event with the support of great sponsors and an army of volunteers. Our goal is to build a positive and lasting impression for racers, spectators and the communities where these events are held. **Please be on your best behavior, keeping in mind that you are representing our event, your team and cycling in general.** In addition, please understand that this event is run solely by volunteers, who appreciate your patience and support.

In addition to the [USA Cycling Rulebook](#), racers are responsible for reading and following the rules set forth in this Race Bible.

The following items are of particular importance:

- **Parking** – Park only where indicated and be respectful of law enforcement and race volunteers.
- **Toilets** – We are lucky that two of our venues have indoor facilities, however, we ask that you please use the portable toilets when they are provided. Public urination and uncovered changing is STRICTLY PROHIBITED.
- **Helmets** – Must be worn and secured at all times while on a bicycle. NO EXCEPTIONS.
- **Road Traffic** – The TT and Road Race courses are open to traffic. Law enforcement will be present, however, please be aware of your surroundings at all times.
- **Leaders' Jerseys** – Omnium leaders' jerseys are provided by [Castelli](#) for the road race. Leaders must wear this jersey.

Failure to comply with these requests, and any additional USAC or law enforcement requests, will result in time penalties and/or disqualification.

Welcome to our race and best of luck!

505 Cycling Team








JDRS
JUNIOR DEVO RACE SERIES



BikeReg

REGISTRATION	Men	Fees				
		ITT	Crit	RR	Omnium	
	Pro-1/2/3	\$30	\$40	\$50	\$105	
	Cat 4	\$30	\$40	\$50	\$105	
	Cat 5 (Novice)	\$30	\$40	\$50	\$105	
	Masters 45+ (1/2/3/4)	\$30	\$40	\$50	\$105	
NO RACE DAY REGISTRATION	Women	ITT	Crit	RR	Omnium	
	Pro-1/2/3	\$30	\$40	\$50	\$105	
	Cat 4/5 (Novice)	\$30	\$40	\$50	\$105	
USAC License Required to Race	Juniors	ITT	Crit	RR	Omnium	
<ul style="list-style-type: none"> Beginner One Day License – \$10 Experienced One Day License – \$25 						
www.usacycling.org/memberships/one-day-licenses	M 11-14	\$20	\$30	\$40	\$75	
Late Registration	M 15-16	\$20	\$30	\$40	\$75	
Only at Sport Systems Packet Pick-up on Friday April 4- add \$10.00	M 17-18	\$20	\$30	\$40	\$75	
	W 11-14	\$20	\$30	\$40	\$75	
	W 15-16	\$20	\$30	\$40	\$75	
Extra criterium - add \$5.00	W 17-18	\$20	\$30	\$40	\$75	
Registration (No mail-in registration)	Collegiate	TTT	ITT	Crit	RR	Omnium
Pre-register online @ BikeReg online. Registration closes on Thursday, April 3 @ 6:00 PM.	USAC Category	\$20	\$20	\$30	\$40	\$75
	* Collegiate riders will race under their own USAC categories/ No collegiate category awards					
Promoter Silvio Menezes Sport Systems 505 Cycling Road Race Director USAC Race Director Level C Email: NMVeloracer@gmail.com Cell: 505-401-0247						

GENERAL INFORMATION

COMBINING CATEGORIES	Categories may be combined based on Chief Referee and Promoter consultation. Categories will be scored separately if this occurs.	
RESULTS & PROTESTS	<p>Results will be posted as quickly as possible at the race venues. Protests must be made within 15 minutes of POSTED results.</p> <ul style="list-style-type: none"> • SATURDAY <ul style="list-style-type: none"> ○ TT Results will post at the TT (on Sport Systems van) as they are finalized, then posted again at the CRIT (near bulletin boards under the stands). ○ CRIT results will be posted near bulletin boards under the stairs?? Stands??. • SUNDAY <ul style="list-style-type: none"> ○ TT and CRIT results from previous day will be posted at the Road Race starting area on the Sport Systems van. ○ Road Race results will be posted at the START LINE on the Sport Systems van. Do not look for them at the finish line! 	
CASTELLI LEADER'S JERSEY	Jerseys decided after Saturday's races will be handed out on Sunday morning prior to the Road Race start. The final jerseys for overall Omnium winners will be handed out on the podium (racers must be present).	
RACE NUMBERS	<p>Racers will receive two identical race numbers at packet pickup. Both numbers must be worn on both sides of the jersey for the CRIT. A single number can be worn on the center of the lower back or on the right side for the TT. NUMBERS MUST BE VISIBLE FOR SCORING.</p>	
RACE NUMBERS	<p>TT Example:</p> 	<p>CRIT and Road Race Example:</p> 
JUNIOR RESTRICTIONS	Junior gear restriction is enforced as per USA Cycling Rulebook 114 and 115 restrictions. Additional TT requirements are listed later in this document.	
FOOD	We are hoping to get food trucks in the area for Saturday, and the Sandia Speedway also has concession food. Check www.505cycling.org for more information.	
LODGING	<p>Courtyard Albuquerque Airport 1920 Yale Blvd SE, Albuquerque, NM 87106 PH: 505.843.6600</p> <p>505 Cycling Registration Link</p> <p>Questions: Silvio Menezes nmveloracer@gmail.com 505.401.0247</p>	

OMNIUM SCORING

- In order to be included for the overall **OMNIUM** prizes, the rider must be registered and he/she must complete all three events.
- For the purpose of scoring, 0 points will be added to your **OMNIUM** tally score for any events in which you do not participate or finish. If you've signed up for the Omnium and have missed an event, you are still eligible to compete in the remaining events.
- The top 25 riders in each category will score points towards the **OMNIUM**.
- The rider with the most number of points in each category will be declared the winner.
- The table below illustrates the points available for each of the races:

TT & CRIT POINTS		ROAD RACE POINTS	
PLACE	POINTS	PLACE	POINTS
1 st	25	1 st	50
2 nd	24	2 nd	48
3 rd	23	3 rd	46
4 th	22	4 th	44
5 th	21	5 th	42
6 th	20	6 th	40
7 th	19	7 th	38
8 th	18	8 th	36
9 th	17	9 th	34
10 th	16	10 th	32
11 th	15	11 th	30
12 th	14	12 th	28
13 th	13	13 th	26
14 th	12	14 th	24
15 th	11	15 th	22
16 th	10	16 th	20
17 th	9	17 th	18
18 th	8	18 th	16
19 th	7	19 th	14
20 th	6	20 th	12
21 st	5	21 st	10
22 nd	4	22 nd	8
23 rd	3	23 rd	6
24 th	2	24 th	4
25 th	1	25 th	2

- **Ties** in the number of Omnium points will be decided by the number of first place finishes. If neither competitor finished first in one of the stages OR if competitors are still tied, the placement in the time trial will determine the overall Omnium winner.

PRIZE LISTS

MUST BE PRESENT AT AWARDS TO COLLECT CASH & PRIZES

(Held after Road Race at Paako Community Center)

- Omnium prizes are listed below. Green highlights designate cash prizes. All others are gift cards or swag prizes.
- The winner of the Omnium race in each category will receive a Castelli jersey.



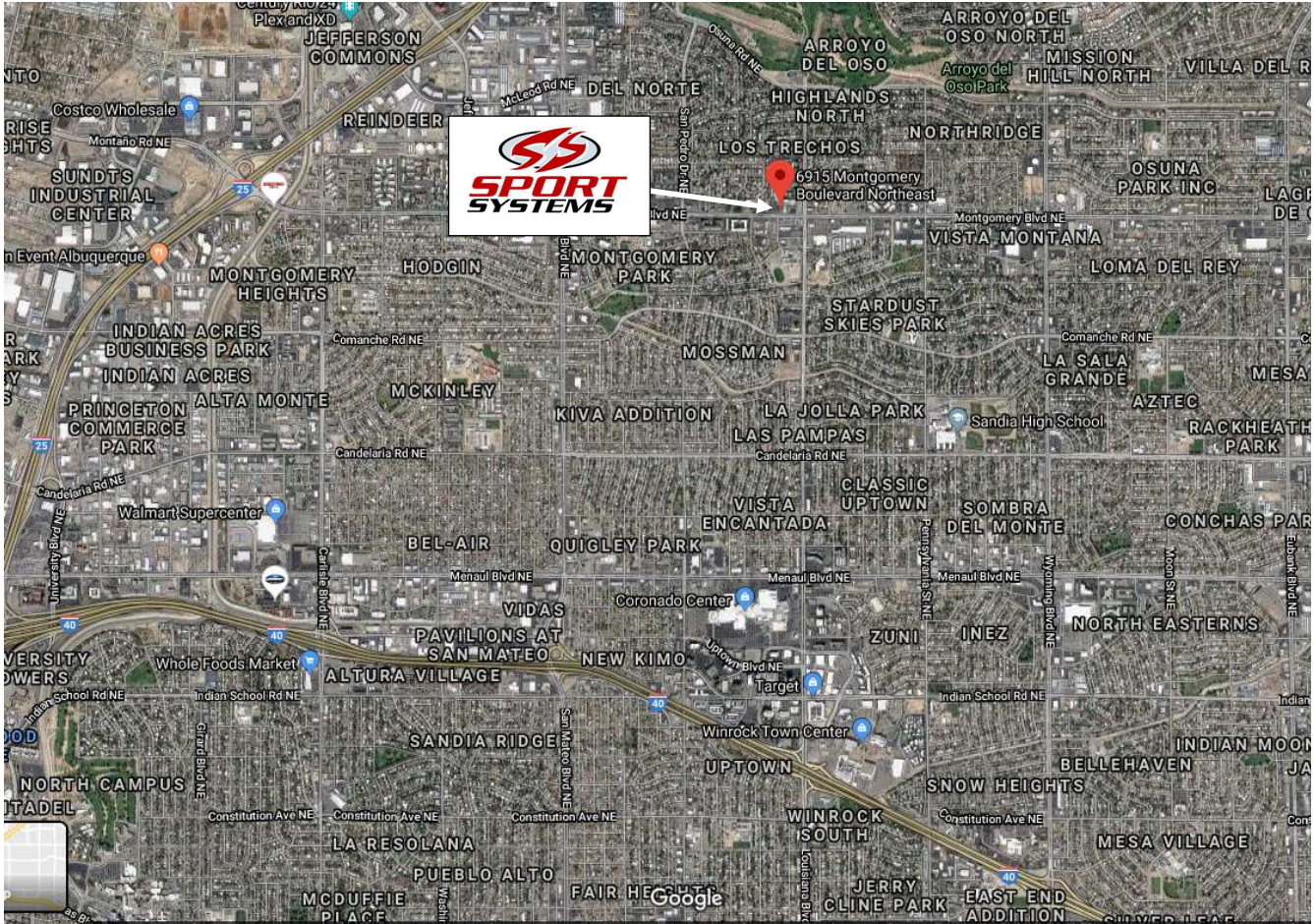
Additional Prizes

- The Men P/1/2/3 and Women P/1/2/3 will compete for the **King of Heartbreak Hill (KOHH) & Queen of Heartbreak Hill (QOHH)** purses of \$200 total, \$100 for the winner of Men P/1/2/3 KOHH and \$100 for the winner of Women P/1/2/3 QOHH. Additionally, the Masters Men 45+ will compete for \$75 KOHH.
- **King/Queen of Heartbreak Hill** will be determined by adding the points awarded at the top of Heartbreak Hill. 5, 4, 3, 2 and 1 points will be awarded to the first five riders to reach the top of Heartbreak Hill in each lap. Riders who accumulate the most points will be declared **King/Queen of Heartbreak Hill**.
- To be eligible for **King/Queen of Heartbreak Hill** prizes, winners must be registered and have completed the road race.
- If two or more riders have an equal number of climbing points, the rider with the highest number of **first place lap finishes** at the top of **Heartbreak Hill** will be declared the winner. If the riders are still tied, their place finish shall be determined by the number of **second, third, fourth, fifth place lap finishes** at the top of **Heartbreak Hill**. If the riders are still tied, the rider with the higher placement in Omnium by points will be declared the winner.
- **Tri-Coach-Terry** has provided a sponsorship for W Cat 4/5 QOHH (best placement at the top of Heartbreak Hill during their lap, must complete race to qualify) and for the Fastest U23 Woman at the TT.

Prize List	1st	2nd	3rd	4th	5th	Totals
P/1/2/3 KOHH	\$100					
P/1/2/3 QOHH	\$100					
Masters Men 45+ KOHH	\$75					
W Cat 4/5 QOHH	\$75					
Fastest U23 Woman TT	\$100					
						505 Cycling Team Sponsorship
						Tri-Coach-Terry Sponsorship
Omnium Prize List	1st	2nd	3rd	4th	5th	Totals
Men P/1/2/3	\$300	\$250	\$150	\$100	\$50	\$850
Women P/1/2/3	\$300	\$250	\$150	\$100	\$50	\$850
Masters Men 45+ (1,2,3,4)	\$200	\$100	\$75	Prize	Prize	\$375
Men Cat 4	Prize	Prize	Prize	Prize	Prize	Prizes
Women Cat 4/5 (Novice)	Prize	Prize	Prize	Prize	Prize	Prizes
Men Cat 5 (Novice)	Prize	Prize	Prize	Prize	Prize	Prizes
Junior M 11-14	Prize	Prize	Prize			Prizes
Junior M 15-16	Prize	Prize	Prize			Prizes
Junior M 17-18	Prize	Prize	Prize			Prizes
Junior W 11-14	Prize	Prize	Prize			Prizes
Junior W 15-16	Prize	Prize	Prize			Prizes
Junior W 17-18	Prize	Prize	Prize			Prizes

PACKET PICKUP

Friday, April 3rd
Evening



**PACKET PICKUP & LATE
REGISTRATION**
Friday, April 3
4 - 7 p. m.
Sport Systems
6915 Montgomery Blvd. NE

NM ORTHOPAEDICS TIME TRIAL

Saturday, April 4th
Morning



NEW MEXICO ORTHOPAEDICS
EXCELLENCE IN MOTION

Rider start times will be posted on race day on the Sport Systems van

CATEGORY	START TIMES	INFORMATION
Collegiate Team/ Individual TT M & W Junior 11-14	~7:30 AM	<ul style="list-style-type: none"> Packet Pickup begins at 7 a.m. at the Start/Finish area. With the exception of the first Time Trial rider, all other times are approximate and depend on turnout. DO NOT MISS YOUR TT START TIME. You will be relegated to the next available time slot; however, the clock will start ticking at your assigned time. For the TT, riders will leave on 30-second intervals No warm ups permitted on TT race course once the first rider is off. ALWAYS WEAR YOUR HELMET WHEN YOU ARE ON YOUR BICYCLE. Watch for trucks in and around the start/finish area. There will be law enforcement present, but please use caution!
W Cat 4/5 (Novice)	~7:45 AM	
Mens Cat 5 (Novice)	~8:00 AM	
W Junior 15-16 W Junior 17-18	~8:20 AM	
Mens Cat 4	~8:40 AM	
Women Pro/Cat 1/2/3	~9:00 AM	
Masters Men 45+ (Cat 1/2/3/4)	~9:20 AM	
M Junior 15-16 M Junior 17-18	~9:50 AM	
Mens P1/2/3	~10:15 AM	

Juniors

- Junior gear roll-out will be conducted as per USAC requirements. Check with Officials.

Junior TT equipment limitations:

- Allowed equipment:**
 - Maximum junior gears as per USAC rule 114 (7.93m (52x14))
 - Road bike with drop bars and both brake calipers functioning
 - Aero rim carbon wheels (16 spoke minimum; spokes must be metal)
 - Skinsuits
 - Snell / ANSI approved aerodynamic helmets
 - Shoe covers
- Disallowed equipment:**
 - Time trial-specific bicycles (e.g., Specialized Transition or Shiv, Trek Speed Concept, Cervelo P3, P4, Giant Trinity, etc.)
 - Disc wheels
 - Clip-on or "aero bars"
 - "Aero" water bottles

NM ORTHOPAEDICS TIME TRIAL

Collegiate

- Individual **collegiate riders** can race in the first grouping or with their category peers. **In order to be included in the Omnium, collegiate riders must race the ITT in their USAC category grouping.**

Para/Hand Cyclist or Tandem Time Trial

- **Para/Hand Cyclist & Tandem** time slots for the **Time Trial** may be added. Please contact the race director if you are interested in participating. There will **NOT** be a separate category or separate prizes for **Para/Hand Cyclist** or **Tandem** participants.
- **Para/Hand Cyclists** are allowed to register for the **RR and ITT** only.
- **Tandems** are allowed to register for the **ITT** only. Registration will be done per rider.

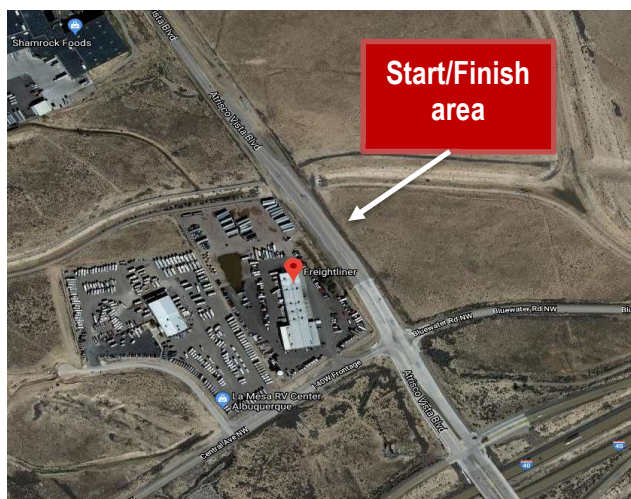


Directions to Course

- From the Big I (I-25/I-40) take I-40 West to Exit No. 149, now named Atrisco Vista, formerly Paseo Del Volcan (top of Nine Mile Hill west of Albuquerque) and proceed north 1/4 mile.
- Parking is on the East side of Atrisco Vista. There is a large pull off on the right, south of Start Line.
- Start will be on Atrisco Vista.
- Parking is not permitted on the Frontage road. You will see designated parking area(s) that are off the road.

Time Trial Course Description

The 20K (<https://www.strava.com/segments/14500305>) out and back course along Atrisco Vista Blvd. starts just north of Albuquerque Freightliner, heads north toward Double Eagle Airport then returns to start area. The pavement is in very good condition and there is a wide bike lane in both directions. Please use bike lane except to pass. **Course is open to traffic. Please be aware of large tractor trailers.**



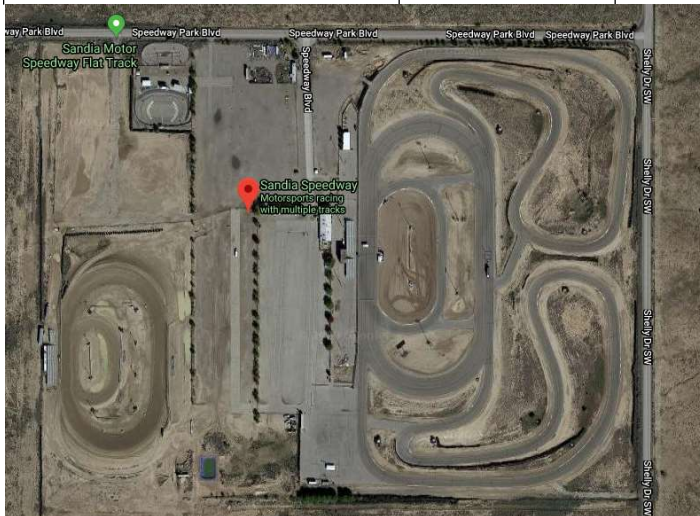
Saturday, April 4th
Morning - Afternoon



CAR CRAFTERS/SANDIA SPEEDWAY CRITERIUM

First race goes off at ~ 10:30 a.m.

CATEGORY	START TIMES	DURATION	INFORMATION
M & W Juniors (11-14)	~10:30 AM	20 min	<ul style="list-style-type: none"> • Packet Pickup at the Sandia Speedway starting at 10 a.m. • No warm-ups permitted on Criterion course while races are in progress. Trainers are recommended for warmup. • This is a closed course! • Junior gear roll-out will be conducted as per USAC requirements. • Combined category races will be scored separately.
Womens Cat 4/5 (Novice) College Women B & C	~11:00 AM	30 min	
Mens Cat 5 (Novice) College Men C	~11:40 AM	30 min	
W Juniors 15-16 W Juniors 17-18	~12:20 PM	30min	
Mens Cat 4 College Men B	~1:00 PM	45 min	
Womens Pro/Cat 1/2/3 College Women A	~2:00 PM	45 min	
Mens Master 45+ (Cat 1,2,3,4)	~2:55 PM	45 min	
M Juniors 15-16 M Juniors 17-18	~3:50 PM	40 min	
Mens P1/2/3 College Men A	~4:45 PM	60 min	



Course: The 505 Cycling Classic Criterion will be held at the Sandia Speedway on a paved 1.1-mile road course. The 36-foot wide road course incorporates technical and sweeping turns as well as bank turns.

The course will be laid out on Friday, with the direction and turns posted at packet pickup and on the www.505cycling.org website that evening.



CAR CRAFTERS/ SANDIA SPEEDWAY CRITERIUM

First race goes off at ~ 10:30 a.m.

Directions to Course

- From ABQ: Take I-40 West and take exit 149 at Atrisco Vista, formally known as Paseo Del Volcan.
- Turn left, heading South over the freeway, and take the first right (west) onto the Frontage road.
- Head west on the Frontage road for 4 miles, turn left at the stop sign onto Shelly Rd., and head south.
- The stadium light poles should be visible from the road. At the stop sign, turn right onto Speedway Blvd., then pull into the gate on your left.



**Sunday, April 5th
Morning**



MOUNTAIN STATES INSURANCE / PAAKO COMMUNITIES ROAD RACE

CATEGORY	START-TIME	DISTANCE	LAPS	INFORMATION
M P1/2/3 College Men A	~9:00 AM	64 Miles	2	<p>Packet Pickup at the race starting at 7:30 a.m.</p> <p>The promoter reserves the right to combine categories as necessary. <u>Combined categories</u> will be scored separately..</p> <p>Neutral zone: The road race will start on NM14 for all races. Neutral zone will be observed throughout the Paako neighborhood.</p> <p>Yellow Line Rule: The road race will take place on open roads. Yellow line rules will be enforced.</p> <p>DO NOT CROSS THE YELLOW LINE OR YOU WILL BE DISQUALIFIED FROM THE RACE. NO EXCEPTIONS!!</p>
M Cat 4 College Men B	~9:04 AM	64 Miles	2	
M Junior 17-18 M Junior 15-16	~9:08 AM	64 Miles	2	
M Master 45+ (Cat 1/2/3/4)	~9:12 AM	64 Miles	2	
W Pro/Cat 1/2/3 College Women A	~9:13 AM	64 Miles	2	
W Junior 17-18 W Junior 15-16	~9:16 AM	33 Miles	1	
M Cat 5 College Men C	~9:20 AM	33 Miles	1	
W Cat 4/5 College Women B & C	~9:23 AM	33 Miles	1	
M & W Juniors (11-14 Years)	~9:26 AM	33 Miles	1	

Leader's Jersey: A leader's jersey, provided by **Castelli**, will be handed out on Sunday morning to the rider leading the Omnium race after Saturday's races. **Omnium leaders must wear the leader's jersey at the road race.**

The overall category winners of the Omnium race on Sunday will also receive a Castelli jersey.

Feed zone: The feed zone for the RR will be at the top of Heartbreak Hill. Riders are responsible for providing their own feed support personnel.

Collegiate Racers

- Out of courtesy to **Collegiate Racers** looking for upgrade points, the race will provide results for **Collegiate Racers**.
- There will NOT be a separate prize list for **Collegiate Racers**. They will compete for prizes as USAC riders.

Juniors

- Junior gear roll-out will be conducted as per USAC requirements.

Road Race Course Description

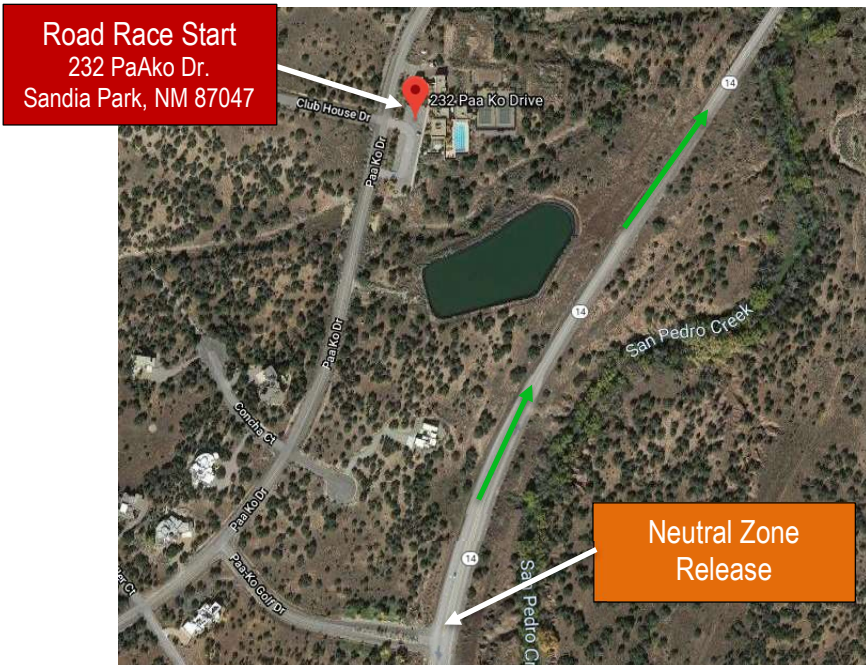
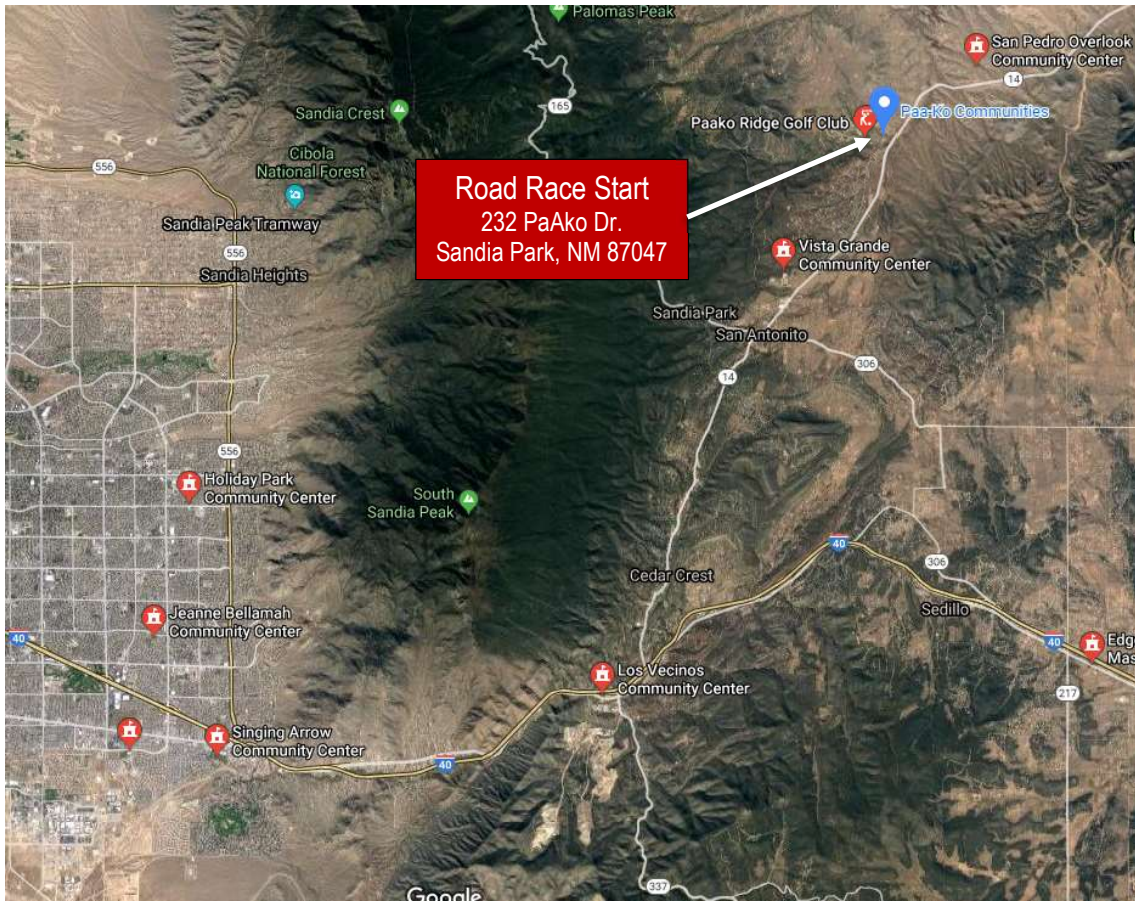


Each lap from NM State Road 14 mile marker 11 is ~ 31 miles with ~2,100 feet of climbing

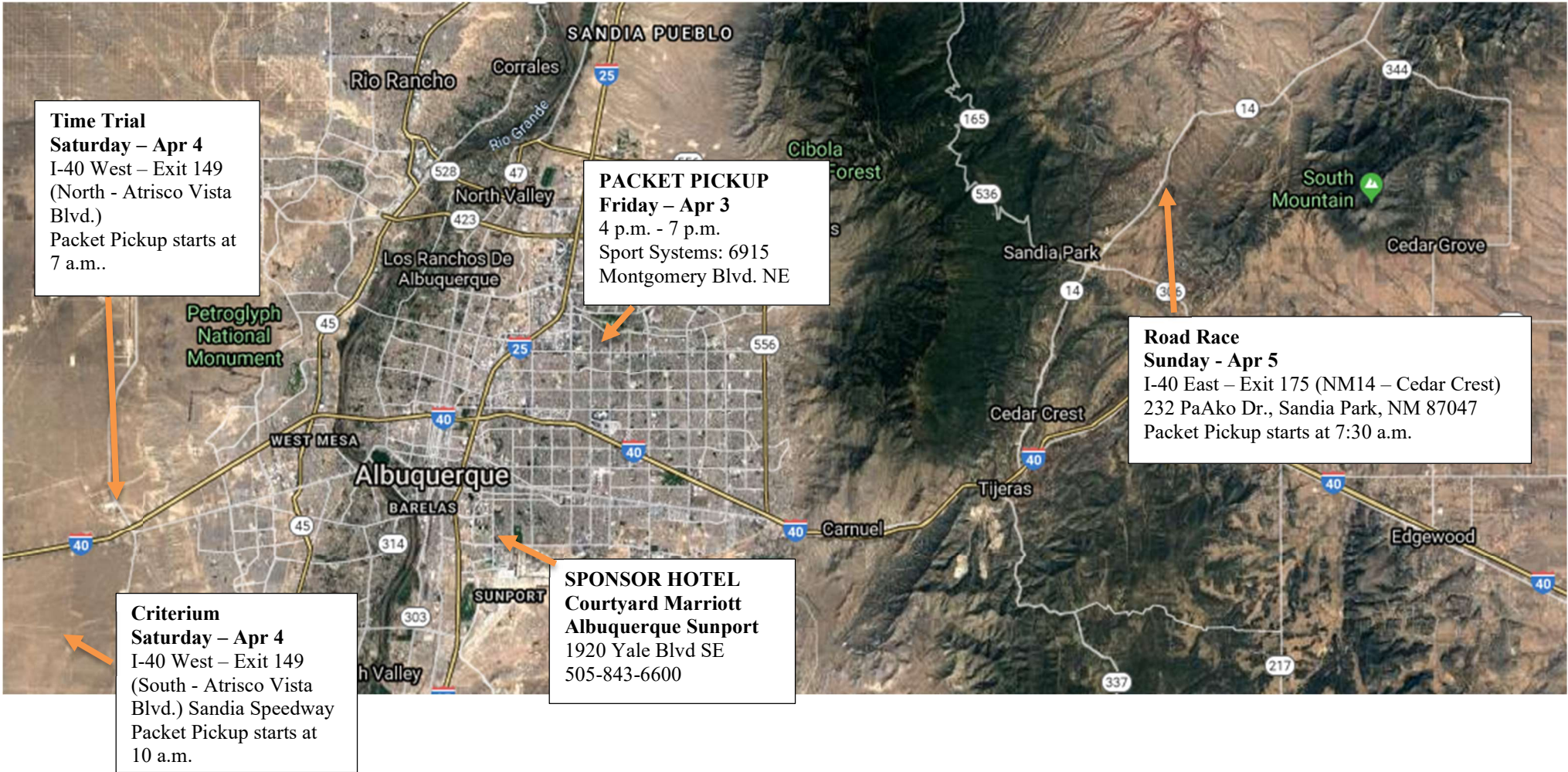
(<https://www.strava.com/segments/14498124>) 505 Cycling Short Course

1. Start: Paako Community Center
2. Racers will turn left onto NM 14 and travel east to the intersection of NM 14 and NM 344.
3. Riders will turn right onto NM 344.
4. They will follow NM 344 up Heartbreak Hill, through Cedar Grove to intersection of NM 344 and NM 306 (a.k.a. Frost Road).
5. Riders will turn right onto NM 306.
6. Riders will proceed on NM 306 (a.k.a. Frost Rd.) to the intersection of NM 306 and NM 14.
7. Riders will turn right onto NM 14.
8. Riders will proceed on NM 14 to the **finish line @ mile marker 11.**

DIRECTIONS TO ROAD RACE



- From Albuquerque: Take I-40 East toward Santa Rosa
- Take exit 175 toward NM-14/Cedar Crest
- Merge onto NM-333E
- Turn Left onto NM-14N/NM-14 Scenic N
- Turn Left toward Paako Drive
- Drive approximately 2 miles. Paako Community Center will be on your right.
- Paako Communities | 232 Paako Drive | Sandia Park, NM 87047
- Please park along Paako Dr. and Club House Dr. Do not park in the Community Center parking lot.



Time Trial
Saturday - Apr 4
I-40 West - Exit 149
(North - Atrisco Vista Blvd.)
Packet Pickup starts at 7 a.m..

PACKET PICKUP
Friday - Apr 3
4 p.m. - 7 p.m.
Sport Systems: 6915
Montgomery Blvd. NE

Road Race
Sunday - Apr 5
I-40 East - Exit 175 (NM14 - Cedar Crest)
232 PaAko Dr., Sandia Park, NM 87047
Packet Pickup starts at 7:30 a.m.

criterium
Saturday - Apr 4
I-40 West - Exit 149
(South - Atrisco Vista Blvd.) Sandia Speedway
Packet Pickup starts at 10 a.m.

SPONSOR HOTEL
Courtyard Marriott
Albuquerque Sunport
1920 Yale Blvd SE
505-843-6600